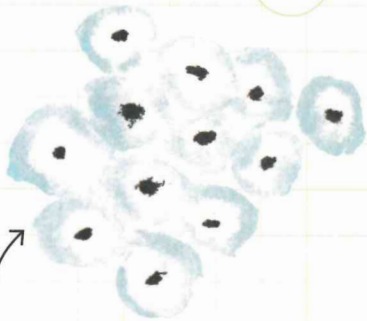


# Can you spot . . . frogs and tadpoles?

Frogs and toads come out of hibernation at the beginning of spring and straight away start looking for a partner so they can lay eggs. Both need to breed and lay their eggs in water, and although frogs will often choose the nearest pond, toads always return to the pond where they were born.

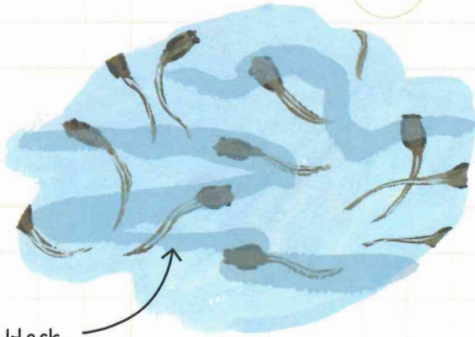
Look out for eggs, called spawn, in ponds and ditches. As the days go by, the tadpoles will emerge from their jelly and start to grow legs—first the back, then the front—and their tails will start to shrink. They grow bigger and bigger until they're fully grown frogs! Can you spot them at these different stages?

## Frogspawn



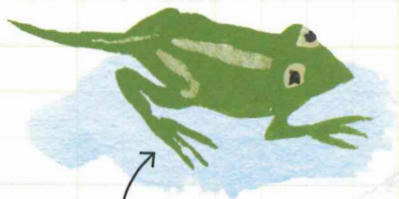
Clumps of round balls of jelly

## Tadpoles



Round black heads and long tails

## Froglets



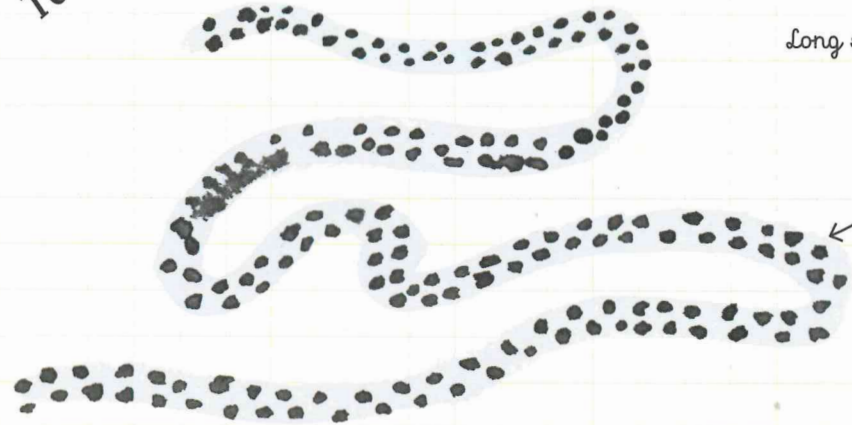
Tiny, miniature frogs, only 12 weeks old

## Frogs

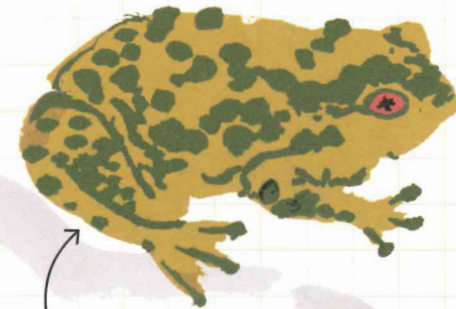


Wet green skin, can jump

## Toadspawn



Long strings of jelly



They have darker, bumpy skin. You will most often see them at night.

## Toads



## Newts



Another kind of amphibian that lives in water. They have longer, fuller tails than froglets.